

# SecureLink Appliance

## Network Adapter



The SecureLink external network adapter includes SecureLink 2.0 API and the necessary scanner drivers to make traditional USB-connected TellerScan® and CheXpress® scanners into network-enabled devices. Scanners are optimized to run over a network using SecureLink by Digital Check® 2.0 API and controlled via your bank's network-based application.



### USB TO NETWORK SOLUTION

Traditional USB scanners, like the Digital Check® CheXpress CX30 and TellerScan TS240/TS500 models, can operate over a network utilizing the SecureLink network appliance: an external device (the size of a small hockey puck) that attaches to the base of the scanner via a USB cable.



### SECURE & COMPATIBLE

Data is transmitted over a TLS-encrypted security protocol, ensuring that customer data is safe and secure. The SecureLink network appliance is also backward compatible and can run alongside older SecureLink devices.

### ETHERNET OR WI-FI CONNECTION

Scanners can be operated securely via an Ethernet cable, or even over a Wi-Fi connection, on the external SecureLink appliance using a supported check capture application.

### KEY FEATURES & BENEFITS

- **Browser-Based and Network Controlled**
- **Connect CX30, TS240, or TS500 Scanners to Any Network Device**
- **Connects via Ethernet or Wi-Fi**
- **Small Form Factor**

## POWERED BY THE INTELLIGENT SECURELINK 2.0 API

SecureLink is set up to accept a streamlined set of commands from the scanner's native API through browser-based protocols. SecureLink 2.0 API is loaded onto the SecureLink appliance, which operates as a "mini computer" between the scanner and the workstation. The SecureLink network appliance contains all the hardware needed to turn CheXpress and TellerScan devices into network-enabled scanners.

### Onboard Processing

SecureLink 2.0 API performs key functions such as MICR processing, OCR verification, image cleanup and thresholding, cropping, and compression. These are ordinarily done by the host PC, but with the SecureLink network appliance, they all take place on the external module.

### Eliminate Network Bottlenecks

Sending raw images across your network can consume a huge amount of bandwidth and slow down the scanner speed. By performing image processing and compression BEFORE the files hit your network, the SecureLink appliance eliminates several common bandwidth constraints that occur when performed by the host PC.

### Device Agnostic

With the SecureLink appliance, scanners can be controlled by any device capable of using browser commands -- not just traditional Windows-based PCs. Compatibility options include Mac OS, Linux, thin-client workstations, tablets, and smartphones (iOS or Android).



# SecureLink Appliance

## Specifications



### SecureLink Appliance Rear View



- USB Connection to Scanner
- Ethernet Connection to Workstation

### Dimensions

Height: 1.1" (2.79 cm)  
Width: 3.4" (8.63 cm)  
Length: 4" (10.16 cm)  
Weight: 0.19 lbs. (0.09 kg)

### Standard Warranty

One year pursuant to Digital Check Corp.'s limited product warranty

### Electrical

Input Voltage: 100 to 240 VAC, 50/60 Hz  
Separate Standard Power Supply: Auto sensing for voltage

### Environmental

Operating Temperature: 60° - 90° F (15° - 32° C)  
Operating Humidity: 35 - 85% non-condensing

### Certifications

**Safety:**  
CE

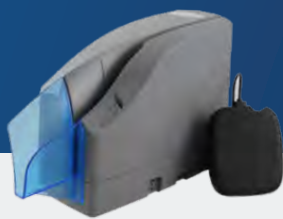
**Emissions:**  
FCC Class A  
CE

RoHS Compliant

## SUPPORTED SCANNERS

The SecureLink appliance can be connected to Digital Check's CheXpress CX30, TellerScan TS240, and TellerScan TS500 check scanners.

CheXpress CX30



TellerScan TS240



TellerScan TS500



### Part Numbers

170000-06 SL (USB/LAN SecureLink Appliance)  
170000-07 SL (WiFi SecureLink Appliance)

